

ACTION

IMPACT SOCKETS



2 1/2" Drive

6-Point normal



1

Type	A/F mm	Drawing	D1 mm	D2 mm	L mm	L2 mm
Metric						
DO6212-0-075	75	A	118	127	140	42
DO6212-0-077	77	A	122	127	140	45
DO6212-0-080	80	A	124	127	140	45
DO6212-0-085	85	C	130	127	140	52
DO6212-0-090	90	C	136	127	145	52
DO6212-0-095	95	C	146	127	145	52
DO6212-0-100	100	C	149	127	150	58
DO6212-0-105	105	C	155	127	155	58
DO6212-0-110	110	C	161	127	160	60
DO6212-0-115	115	C	167	127	165	62
DO6212-0-120	120	C	174	127	170	67
DO6212-0-125	125	C	181	127	175	72
DO6212-0-130	130	C	188	127	175	72
DO6212-0-135	135	C	195	127	180	77
DO6212-0-140	140	C	202	127	180	77
DO6212-0-145	145	C	208	127	185	83
DO6212-0-150	150	C	215	127	185	83
DO6212-0-155	155	C	221	127	190	90
DO6212-0-160	160	C	227	127	190	90
DO6212-0-165	165	C	234	127	195	95
DO6212-0-170	170	C	241	127	195	95
DO6212-0-175	175	C	248	127	200	100
DO6212-0-180	180	C	254	127	200	100
DO6212-0-185	185	C	258	152	210	105
DO6212-0-190	190	C	265	152	210	105
DO6212-0-200	200	C	275	152	220	110

EXTENSION BARS & UNIVERSAL JOINTS

Universal joints with pin hole

2

Type	Square-drive	Drawing	D2 mm	L mm	-
DO9038-0-000	3/8"	A	21	50	-
DO9012-0-000	1/2"	A	29	60	-
DO9034-0-000	3/4"	A	44	105	-
DO9100-0-000	1"	A	54	133	-

Extension bars with pin-hole

3

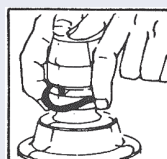
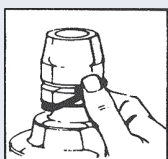
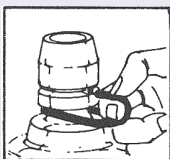
Type	Square-drive	Drawing	D2 mm	L mm	-
DO7014-0-050	1/4"	D	13	50	-
DO7014-0-100	1/4"	D	13	100	-
DO7038-0-075	3/8"	D	19	75	-
DO7038-0-125	3/8"	D	19	125	-
DO7038-0-150	3/8"	D	19	150	-
DO7012-0-075	1/2"	D	25	75	-
DO7012-0-125	1/2"	D	25	125	-
DO7012-0-250	1/2"	D	25	250	-
DO7012-0-460	1/2"	D	25	460	-
DO7034-0-100	3/4"	D	44	100	-
DO7034-0-175	3/4"	D	44	175	-
DO7034-0-250	3/4"	D	44	250	-
DO7100-0-175	1"	D	54	175	-
DO7100-0-200	1"	D	54	200	-
DO7100-0-250	1"	D	54	250	-
DO7100-0-400	1"	D	54	400	-
DO7112-0-250	1 1/2"	D	86	250	-
DO7212-0-500	2 1/2"	D	127	500	-

RETRING



Retring

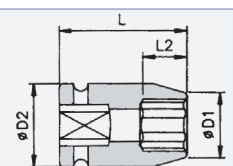
Type	Square-drive	D2 mm
DO10032S	3/4"	36,5
DO18708S	3/4"	44,5
DO18715S	3/4" & 1"	53,9
DO10008S	1"	44,5
DO10021S	1 1/2"	76,2
DO10025S	1 1/2"	85,7



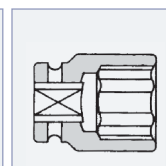
1. Place Socket Retainer over square driver. Place socket on square driver aligning retention holes. Hold center pin of Retainer between thumb and index finger, and insert it through retention holes.
2. Push center pin of Socket Retainer all the way in.
3. Pull O-ring of Socket Retainer up into groove Socket.

PINS AND RINGS

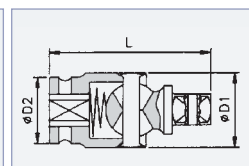
Type	Square-drive	D2 mm
DO1014-0-000	1/4"	-
DO1038-0-000	3/8"	-
DO1012-0-000	1/2"	-
DO1034-0-000	3/4"	-
DO1100-0-000	1"	54
DO1100-0-086	1"	86
DO1100-0-095	1"	95
DO1112-0-000	1 1/2"	86
DO1112-0-095	1 1/2"	95
DO1112-0-127	1 1/2"	127
DO2112-0-000	2 1/2"	-



DRAWING A



DRAWING C



DRAWING D

ACTION

IMPACT SOCKETS



ADAPTORS

Adaptors with pin hole

1

Type	Square-drive	Outside	Drawing	D2 mm	L mm
DO8038-0-012	3/8"	1/2"	E	22	36
DO8012-0-034	1/2"	3/4"	E	30	48
DO8012-0-038	1/2"	3/8"	E	26	38
DO8034-0-012	3/4"	1/2"	E	40	58
DO8034-0-100	3/4"	1"	E	40	63
DO8100-0-034	1"	3/4"	E	52	80
DO8000-0-112	1"	1 1/2"	E	52	91
DO8112-0-100	3/4"	1"	E	84	95

Impact adaptors

2

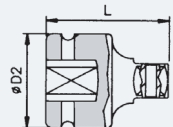
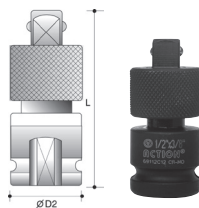
Type	Square-drive	Hex drive	Drawing	L mm	D mm
DO69306050	1/4"	1/4"	G	50	9
DO69306075	1/4"	1/4"	G	75	9
DO69306100	1/4"	1/4"	G	100	9
DO69306150	1/4"	1/4"	G	150	9
DO69316050	1/4"	3/8"	G	50	13
DO69316075	1/4"	3/8"	G	75	13
DO69316100	1/4"	3/8"	G	100	13
DO69318075	7/16"	3/8"	G	75	13
DO69328075	7/16"	1/2"	G	75	17

QUICK-CHANGE ADAPTORS



Quick-Change adaptors

Type	Drive-in	Drive-out	L mm
DO69110C08	1/4"	1/4"	35
DO69111C12	3/8"	3/8"	46
DO69112C12	1/2"	3/8"	54
DO69112C16	1/2"	1/2"	60
DO69114C24	3/4"	3/4"	78
DO69115C24	1"	3/4"	90
DO69115C32	1"	1"	100



DRAWING E



DRAWING G

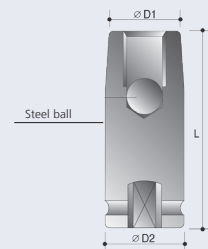
STUD BOLT SETTERS

Stud bolt setters

Type 3/8"	Size	D2 mm	D1 mm	L mm
DO69781053	M6 x 1,0	22	12,5	50
DO69781060	M8 x 1,25	22	14,5	50
DO69781063	M10 x 1,5	22	17	50
DO69781066	M12 x 1,75	22	19	50

Tapeindzetter

Type 1/2"	Size	D1 mm	D2 mm	L mm
DO69782010	M6 x P1,0	25	13	55
DO69782018	M8 x P1,25	25	15	55
DO69782022	M10 x P1,5	25	17	55
DO69782027	M12 x P1,75	25	19	55
DO69782031	M14 x P2,0	25	22	55
DO69782035	M16 x P2,0	30	27	75



Also available with other pitch.

TAP HOLDING SOCKETS

Tap holding sockets

Type 3/8"	□ A	Ø d	L	D1 & D2	Type 1/2"	□ A	Ø d	L	D1 & D2
	mm	mm	mm			mm	mm	mm	

Metric

DO6321B001	3,4	4,5	38	19	DO6322B001	3,4	4,5	40	22
DO6321B002	4,9	6,0	38	19	DO6322B002	4,9	6,0	45	22
DO6321B003	5,5	7,0	40	19	DO6322B003	5,5	7,0	45	22
DO6321B004	6,2	8,0	40	19	DO6322B004	6,2	8,0	45	22
DO6321B005	7,0	9,0	43	19	DO6322B005	7,0	9,0	45	22
DO6321B006	8,0	10,0	45	19	DO6322B006	8,0	10,0	45	22
DO6321B007	9,0	11,0	45	19	DO6322B007	9,0	11,0	45	22
DO6321B008	9,0	12,0	45	22	DO6322B008	9,0	12,0	50	22
DO6321B009	11,0	14,0	45	22	DO6322B009	11,0	14,0	52	22

